


Presentation 



Sigma Magic

Uninstall Software

Unload Software

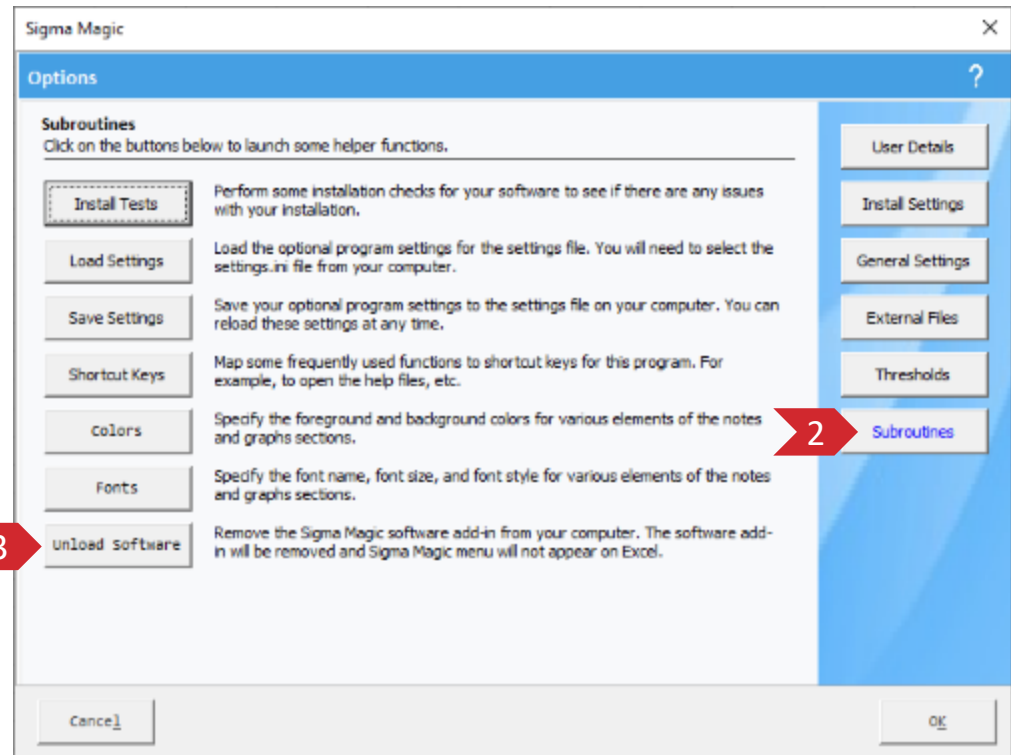
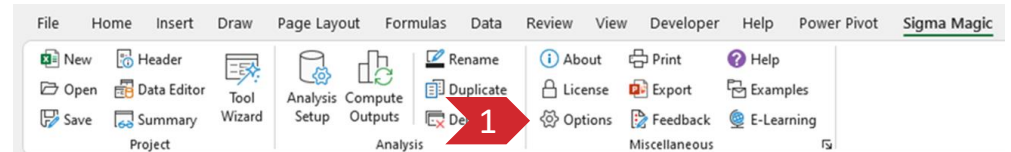
If you want to temporarily disable the software so that Sigma Magic menus don't appear in Microsoft Excel, then use these steps.

Click on the Options button (#1) on the main Sigma Magic menu bar.

Click on the Subroutines button (#2) on the right.

Click on the Unload Software button (#3).

To make Sigma Magic menus appear again, click on File > Options > Add-Ins > Go and select the checkbox next to Sigma Magic and then click on OK button.



Uninstall Software

If you want to permanently remove the Sigma Magic software from your system, go to your control panel and then click on “Uninstall a program” and then select Sigma Magic from the list of programs and then click on the Uninstall button.

Click on the Yes button (#1) on the User Account Control to continue with the uninstallation.

Click on the Yes button (#2) on the Sigma Magic Uninstall dialog box to completely remove the software from your computer.

Note that only the software and its related files are removed. Any files that you created using the Sigma Magic software will not be removed by this uninstaller.

